







# Interactive Flat Panel

for Corporate Applications

## Innovative Interactive Flat Panels for Inspirational Communication and Collaboration

Spanning a full product range from 55" to 86" screen sizes, BenQ corporate Interactive Flat Panels (IFPs) ideally suit meeting spaces of any size with stylish designs incorporating two front-facing speakers and integrated pen trays. With pioneering innovations that include 20-point multi-touch, 4K resolution, Smart Eye-Care, and Smart Account Management System (Smart AMS), BenQ's corporate IFPs deliver intuitive collaboration and display interactivity with the ease of wireless presentation, open-platform software compatibility, and hassle-free maintenance.

## Foster Collaboration: Effective Meetings Wherever, Whenever

### Collaborate via Smart Annotation and Multi-Touch Capability

Designed for modern offices, BenQ corporate IFPs offer best-in-class tools for interactive meetings without external PCs. EZWrite 4.0 annotation app and NFCPen facilitate brainstorming with efficient note-taking and effective idea-sharing. With up to 20-point simultaneous multi-touch capability, BenQ corporate IFPs can engage more participants simultaneously for ideas, collaboration, and better results.

### EZWrite 4.0

#### Efficient and Collaborative Meetings at a Touch

Pre-installed on BenQ IFPs, EZWrite 4.0 includes tools for presentation, collaboration, annotation, and follow-up that can stimulate seamless group discussion and interaction.



#### Intelligent Handwriting Recognition

Introducing EZWrite 4.0's newly added advanced handwriting recognition feature, which allows users to convert text, numbers, forms, and drawings into highly legible materials without having to switch modes, while performing calculation and geometric functions for efficient professional meetings.

\*Available on RP654K/RP704K/RP750K/RP860K.



#### Access Diverse Files on the Fly

EZWrite 4.0 directly opens a wide range of files, from Microsoft documents to image files for convenient annotations in productive meetings without the need for external PCs.



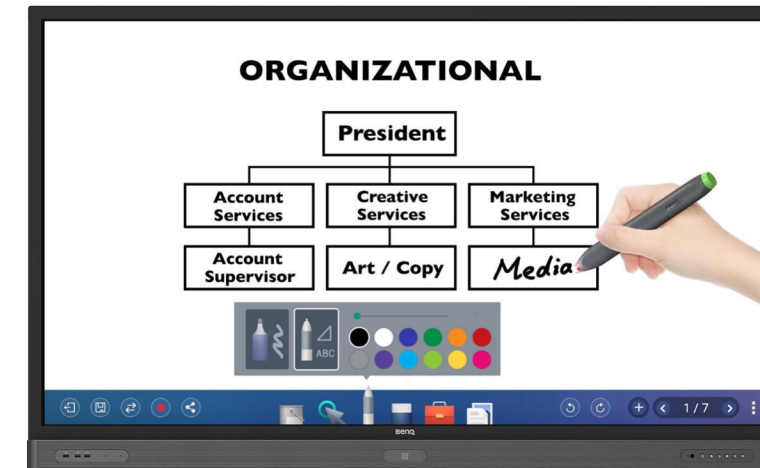
#### Floating Toolbar

A floating on-screen menu works on any input source including Android™ apps, allowing participants to quickly access frequently used tools such as EZWrite 4.0's whiteboard mode, annotation tools, eraser, color selection, video recording and print sharing for a smooth meeting flow.



#### Tap-and-Write Annotation and Simple Color Switching

Tapping the NFCPen can activate EZWrite 4.0 and allow users to start writing on BenQ IFPs, which come with two NFCPens featuring dual color tips for a total of four colors: red, green, blue, and black. Requiring virtually zero maintenance, NFCPen is waterproof and built to last with battery-free NFC technology as well as no need for IFP pairing.



#### Data to Go

All meeting results and progress can be saved in .pdf or .png format and shared via email or by scanning a QR code, which remains available for 30 minutes to avoid information leakage. For added convenience, meeting data can be printed from any printer on the network or saved on a USB flash drive for easy information access anytime, anywhere.



#### Tool Box

Dynamic tool box include features such as Calculator, Geometry Recognition, Timer, Buzzer, Team Post, Score Board, and Draw Lots that empower leaders to create rich, vibrant, and fun meetings and trainings.



### Smart Account Management System for Personalized File Management

To enforce privacy protection while ensuring convenience, BenQ IFPs feature Smart Account Management System (Smart AMS) for multi-account management via NFC technology, which allows presenters to directly access personal system setting and folders, as well as bring up customized presentation settings on the IFP simply by tapping an ID card on its front-bezel sensor. Additionally, Smart AMS also offers instant access to major cloud storage services such as Google Drive and Dropbox after logging in without having to enter password on BenQ IFPs.

\*This function will be available in 2017 Q4 on RP654K/RP704K/RP750K/RP860K models.



## Share and Collaborate with Wireless Solution

Integrated into BenQ corporate IFPs, the InstaQShare app enables simple wireless presentation and collaboration by screen mirroring. Simply by launching the InstaQShare host app on the IFP and downloading the client app onto an Android, iOS, Mac, or Windows device, up to 16 meeting participants can instantly stream photos, music, presentations, and Full HD videos smoothly.

In addition, BenQ InstaShow™ wireless presentation system and QCast WiFi dongle accommodate diverse BYOD needs. With zero software, InstaShow can simply be plugged into a laptop for instant wireless collaboration at the touch of a button with enterprise-class security. Alternatively, QCast dongle allows Full HD wireless streaming from any laptop, iOS, or Android device.



## Efficient Real-Time Video Conference across Borders with Zoom

With the pre-installed Zoom video conferencing software, BenQ IFPs facilitate effective communication for international corporations without external PCs, training, or complicated server setup. Zoom enables high-quality video conferencing across multiple devices, connecting teams across the globe at minimal cost with a quick click on the invitation URL and meeting ID input. Zoom\* enables powerful screen and content sharing across devices including BenQ IFPs, PCs, Macs, tablets, and smartphones. Employees can even annotate on the shared screen for interactive discussions.



\* Zoom video conferencing requires installation of camera and microphone.

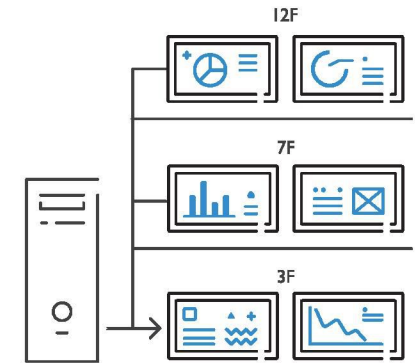
## Hassle-Free Maintenance: Always Ready for Display Productivity

Pre-installed with robust display management, BenQ IFPs provide one-step tools for easy content creation and distribution as well as instant configuration and performance monitoring. This ensures mission-critical corporate performance across all displays with significant cost and resource reduction.

### Multiple Display Administrator (MDA) Software

Multiple Display Administrator (MDA) software enables remote management of a full array of BenQ IFPs and a wide range of third-party displays. Through Ethernet or serial connection, MDA provides centralized control for IT personnel to schedule on/off times and monitor real-time display status to minimize cost, time, and effort associated with adjusting and maintaining individual units.

\* On/off time scheduling is only available on selected models.



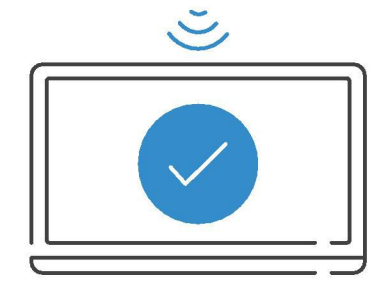
### EasySetting

EasySetting allows IT personnel to install Android™ apps onto a wide selection of displays automatically through BenQ's cloud server, dramatically saving time and effort via one-time configuration of multiple displays in different locations.



### Over-the-Air Updates (OTA)

Over-the-air update feature simplifies display firmware and driver updates. On startup, BenQ IFPs automatically detect updates and deploy firmware upgrades with a few easy steps to maintain smooth operation and peak performance.



Your system is up-to-date.

### Corporate Internet Security Control

To avoid possible corporate internet security breach caused by accessing websites containing inappropriate content, BenQ IFPs allow corporate IT personnel to block access to certain websites by configuring proxy server settings. This feature guarantees that corporate internet remains at a high security level.



\* Product features and specifications may vary in different regions; please contact your local sales representative for detailed information.



## Friendly Design: Unrivaled Compatibility and Ease of Use

BenQ IFPs accentuate the meeting room experience with open-platform compatibility that works with devices and software preferred by corporate employees. BenQ IFP bezels offer multiple I/O ports to maximize connectivity for easy sharing without technical interruptions. In addition, BenQ IFPs offer Smart Eye-Care technology and Germ-Resistant Screens to promote a vision-friendly healthy workplace.

### Smart Eye-Care Solution

Designed for eyesight protection, BenQ IFPs provide proprietary eye-care technology with zero-flicker performance and ultra-low blue light emission that can be activated automatically when participants are close to the displays, preventing eyestrain, eye fatigue and macular degeneration caused by extended sessions in front of a display. With the help of embedded motion sensors, the Smart Eye-Care solution can function intuitively.

In addition, advanced anti-glare screen treatment minimizes distracting reflections and glare for optimal productivity and comfort.

\*For Android source devices, BenQ IFPs will automatically set screen backlight to a comfortable setting instead of Low Blue Light mode.

\*Available on RP654K/RP704K/RP750K/RP860K.



Flicker-free



Low Blue Light



Anti-glare



TÜV Rheinland Certified

BenQ eye-care technology has been rigorously tested by world-renowned TÜV Rheinland experts for true effectiveness on eliminating flickering and reducing blue light emission by our displays.

### Germ-Resistant Screen



BenQ IFPs feature Germ-Resistant Screens with a multilayer coating of non-toxic, long-lasting ionic silver nano agent to kill most bacteria on contact while effectively blocking the spread of germs at work.

\*Available on RP654K/RP704K/RP750K/RP860K.

### Multi-Platform Compatibility

Compatible with Windows, Mac, Linux, and Chrome, BenQ IFPs can seamlessly present content from any device with the plug-and-play simplicity.



### Energy-Saving Operation through Power Saving Mode

Utilizing a smart sensor, power saving mode activates when BenQ IFPs detect no presenters are standing in front of the screen, which intelligently reduces power consumption when not in use.

### Custom Android™ Apps for Business Presentations



Loaded with powerful business apps including WPS Office, Web Browser and Media Player, BenQ IFPs can quickly access, edit, and save various documents, online sources, and videos without using unauthorized apps.

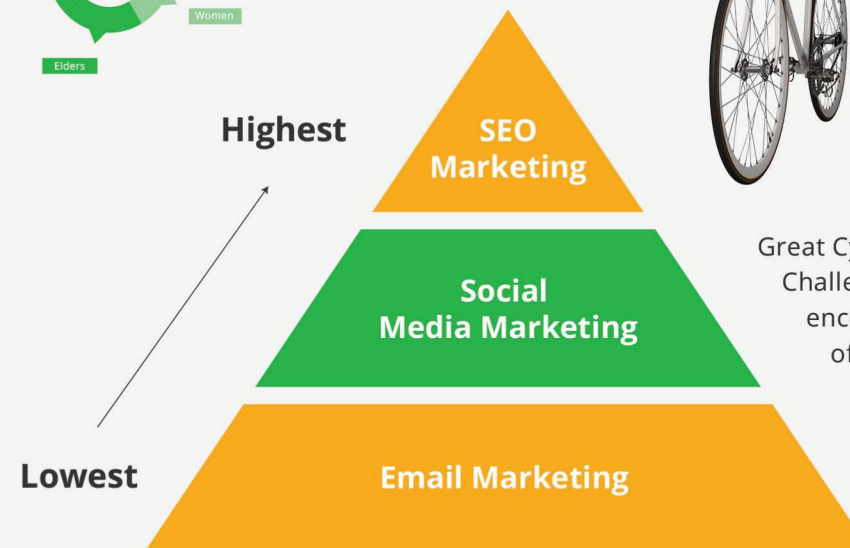
### Driver-Free Touch Technology for Instant Plug and Play



BenQ IFP's touch technology is totally driver-free. By connecting the IFP to a PC via USB, employees can instantly touch the screen to start presenting.

# Bicycle Product Launch Strategy

The key to visibility: SEO Marketing



Great Cycle Challenge encourages people of all ages and fitness levels to get on their bikes and explore dynamic possibilities to enhance their health!

### Multiple Connectivity

Media USB and Slot-in-PC ports are integrated into the IFP bezel for maximum connectivity and a user-friendly experience. The HDMI out port allows users to extend their home screen across multiple displays, while the Slot-in-PC port accepts x86 and Windows systems to enhance IFP functionality. For maximum versatility, BenQ IFPs also feature ports for WiFi dongles and HDMI 2.0.

\*WiFi dongles and Slot-in-PC are only sold in selected regions. Please contact your local sales representative for detailed information.

### Integrated Front-Facing Speaker and Pen Tray

The seamless integration of two front-facing speakers and pen tray makes multimedia content more engaging while enhancing the overall productivity during meetings.

### Recommended Apps via "BenQ Suggest"

The RP series incorporates several recommended Android apps into BenQ Suggest, which further expand the IFPs' potential by simplifying app updates and downloading in the future.



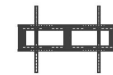
# Interactive Flat Panel



## Accessories



**Trolley**  
RP553K/ RP653K/  
RP654K/ RP704K/  
RP750K/ RP860K



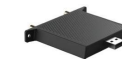
**Wall mount**  
RP553K/ RP653K/  
RP654K/ RP704K/  
RP750K/ RP860K



**Touch pen**  
RP553K/ RP653K



**NFC Pen**  
RP654K/ RP704K/  
RP750K/ RP860K



**USB Wi-Fi Dongle**  
RP654K/ RP704K/  
RP750K/ RP860K



**Slot-in-PC**  
RP654K/ RP704K/  
RP750K/ RP860K

Model Name	RP553K	RP653K	RP654K	RP704K	RP750K	RP860K	
<b>Panel</b>	Screen Size	55"	65"	65"	70"	75"	86"
	Backlight / Lightsource	DLED	DLED	DLED	DLED	DLED	DLED
	Resolution (Pixels)	UHD 3840x2160 pixels	UHD 3840x2160 pixels	UHD 3840x2160 pixels	UHD 3840x2160 pixels	UHD 3840x2160 pixels	UHD 3840x2160 pixels
	Brightness (Typical)	350 nits	450 nits	330 nits	330 nits	330 nits	330 nits
	Contrast Ratio (Typical)	1,200:1	1,200:1	1,200:1	4,000:1	1,200:1	1,200:1
	Viewing Angle (Horizontal/Vertical)	178°/178°	178°/178°	178°/178°	178°/178°	178°/178°	178°/178°
	Response Time (ms)	6ms	6ms	6ms	8ms	8ms	8ms
	Color Gamut (x% NTSC)	65%	65%	72%	72%	72%	72%
	Panel Bit (8 or 10)	10 bit	10 bit	10 bit	10 bit	10 bit	10 bit
	Light Life (Typical)	30,000 hours	30,000 hours	30,000 hours	30,000 hours	30,000 hours	30,000 hours
<b>Glass</b>	Display Orientation	Landscape	Landscape	Landscape	Landscape	Landscape	Landscape
	Tempered Glass	4mm, Tempered Glass	4mm, Tempered Glass	4mm, Tempered Glass	4mm, Tempered Glass	4mm, Tempered Glass	4mm, Tempered Glass
<b>Touch</b>	Anti-Glare (AG) Coating	Yes	Yes	Yes	Yes	Yes	Yes
	Germ-Resistant Screen	N/A	N/A	Yes	Yes	Yes	Yes
	Touch Technology	IR Touch	IR Touch	IR Touch	IR Touch	IR Touch	IR Touch
<b>Audio</b>	Numbers of Touch	Up to 10 Point Multi-touch	Up to 10 Point Multi-touch	Up to 20 Point Multi-touch	Up to 20 Point Multi-touch	Up to 20 Point Multi-touch	Up to 20 Point Multi-touch
	Resolution (Points Area Function)	32,767*32,767	32,767*32,767	32,767*32,767	32,767*32,767	32,767*32,767	32,767*32,767
	Touch Interface	x4 (USB type B)	x4 (USB type B)	x2 (USB type B)	x2 (USB type B)	x2 (USB type B)	x2 (USB type B)
<b>Connectivity</b>	OS Supported	Windows 7 / 8 / 10 / WinCE / Vista / Linux / Mac / Android / Chrome			Windows XP / 7 / 8 / 10 / WinCE / Vista / Linux / Mac / Android / Chrome		
	Internal Speaker	20Wx2	20Wx2	16Wx2	16Wx2	16Wx2	16Wx2
	Line Out (Audio Out, 3.5mm)	x1	x1	x1	x1	x1	x1
	Line In (3.5mm)	N/A	N/A	x1	x1	x1	x1
	MIC (3.5mm)	x1	x1	N/A	N/A	N/A	N/A
	Coax Output	N/A	N/A	x1	x1	x1	x1
	AC Power						
	Power (AC) Input	x1	x1	x1	x1	x1	x1
	Power Switch	x1	x1	x1	x1	x1	x1
	<b>Control</b>	Basic IO					
VGA Input		x1	x1	x1	x1	x1	x1
VGA Output		N/A	N/A	N/A	N/A	N/A	N/A
HDMI Input		x4 (2.0x1, 1.4x3)	x4 (2.0x1, 1.4x3)	x3 (2.0x1, 1.4x2)	x3 (2.0x1, 1.4x2)	x3 (2.0x1, 1.4x2)	x3 (2.0x1, 1.4x2)
HDMI Output		x1	x1	x1	x1	x1	x1
Display Port		N/A	N/A	x1	x1	x1	x1
Slot-in-PC		N/A	N/A	x1	x1	x1	x1
OPS Slot		x1	x1	N/A	N/A	N/A	N/A
Legacy IO							
Composite Video In		N/A	N/A	x1	x1	x1	x1
<b>Power</b>	USB Player (Photo, Video)	x4 (2.0x3, 3.0x1)	x4 (2.0x3, 3.0x1)	x6 (2.0x5, 3.0x1)	x6 (2.0x5, 3.0x1)	x6 (2.0x5, 3.0x1)	x6 (2.0x5, 3.0x1)
	RS232 Input	x1	x1	x1	x1	x1	x1
	RJ45 Port	x1	x1	x1	x1	x1	x1
<b>Mechanical</b>	Firmware Update	USB/OTA	USB/OTA	USB/OTA	USB/OTA	USB/OTA	USB/OTA
	Voltage	100V-240V, 50/60Hz	100V-240V, 50/60Hz	100V-240V, 50/60Hz	100V-240V, 50/60Hz	100V-240V, 50/60Hz	100V-240V, 50/60Hz
<b>RF</b>	Typical (Watt)	170W	200W	210W	245W	315W	371W
	Weight (Without / With Packing) (kg)	44kg/53kg	49kg/59kg	56kg/61kg	58kg/71kg	64kg/80kg	81kg/108kg
	Dimension (WxHxD) (mm)	1292*833*110mm	1,511x957x150mm	1,521x967x128mm	1,638x1034x128mm	1,762x1086x130mm	1,988x1230x129mm
	Wall Mounting (VESA) (mm)	4 holes (300x300mm) , Screw M6x 25mm	4 holes (400x400mm) , Screw M8x 25mm	4 holes (600x400mm) , Screw M8x 25mm	4 holes (800x400mm) , Screw M8x 25mm	4 holes (800x400mm) , Screw M8x 25mm	4 holes (800x400mm) , Screw M8x 25mm
<b>Optional</b>	Handle	N/A	N/A	x2	x2	x2	x2
	Pen Tray	x1	x1	x1	x1	x1	x1
<b>Package / Accessory</b>	NFC Reader / Writer	N/A	N/A	x1	x1	x1	x1
	On-Screen Display Languages	English/ French/ Spanish/ Portuguese/ Simplified Chinese/ Traditional Chinese/ German/ Dutch/ Polish/ Russian/ Czech/ Danish/ Swedish/ Italian/ Romanian/ Finnish/ Norwegian/ Greek/ Turkish/ Arabic/ Japanese (21 Languages)					
	Remote Controller	x1	x1	x1	x1	x1	x1
	Power Cord (By Region)	x4 (1.8m)	x4 (1.8m)	x4 (1.8m)	x4 (1.8m)	x4 (1.8m)	x4 (1.8m)
	Audio Cable	N/A	N/A	x1 (5m)	x1 (5m)	x1 (5m)	x1 (5m)
	VGA Cable	x1 (1.5m)	x1 (1.5m)	x1 (5m)	x1 (5m)	x1 (5m)	x1 (5m)
	HDMI Cable	x1 (1.5m)	x1 (1.5m)	N/A	N/A	N/A	N/A
	Quick Start Guide	x1	x1	x1	x1	x1	x1
	User's Manual Electronic File	x1	x1	x1	x1	x1	x1
	USB Cable for Touch	x1 (3m)	x1 (3m)	x1 (10m)	x1 (10m)	x1 (10m)	x1 (10m)
<b>Optional</b>	Touch Pen (Stylus)	x2	x2	x2 (NFC)	x2 (NFC)	x2 (NFC)	x2 (NFC)
	Software License Card	x1	x1	x1	x1	x1	x1
	Wall Mount	Yes	Yes	Yes	Yes	Yes	Yes
	QCast HDMI Streaming Dongle	Yes	Yes	Yes	Yes	Yes	Yes
<b>Optional</b>	USB Wi-Fi dongle	N/A	N/A	Yes	Yes	Yes	Yes
	Slot-in-PC	N/A	N/A	Yes	Yes	Yes	Yes
	Trolley	Yes	Yes	Yes	Yes	Yes	Yes

\*\*\* Product features and specifications may vary in different regions; please contact your local sales representative for detailed information.



# BenQ Makes Change Visible for You

The world is reshaped by display technology. As a leader of this transformation, we endeavor to explore all possibilities to develop comprehensive display solutions that create value for your customers in diverse fields. Our vast product portfolio forms the foundation of a wide range of integrated solutions that deliver unique and expansive display experiences. Our customer-centric philosophy guides us to your increasing requirements for efficiency, quality, and performance. Responding with our expertise in design and execution of future-proof solutions supported by world-class service, we make change visible for you.

Through in-depth market and customer insight, we identify unique movements in various vertical markets. Whether for visual, corporate, education or professional display requirements, our consultative process and comprehensive product breadth enable solutions that make change visible to fulfill your diversified needs.



Let us help innovate your business with effective cost-efficient productivity.  
Find our more : [www.business-display.benq.com](http://www.business-display.benq.com)



#### Headquarters BenQ Corporation

16 Jihu Road, Neihu, Taipei 114, Taiwan  
Tel: +886-2-2727-8899 Fax: +886-2-2797-9288

#### North America BenQ America Corp.

3200 Park Center Drive, Suite 150,  
Costa Mesa CA 92626 U.S.A.  
Tel: +1-714-559-4900 Fax: +1-714-557-0200

#### Asia Pacific BenQ Asia Pacific Corp.

12 Jihu Road, Neihu, Taipei 114, Taiwan  
Tel: +886-2-2727-8899 Fax: +886-2-2656-2438

#### Europe BenQ Europe B.V.

Meerenakkerweg 1-17 5652 AR  
Eindhoven CA 92626 U.S.A.  
Tel: +31-88-888-9200 Fax: +31-88-888-9299

#### China BenQ (IT) CO., Ltd

181 Zhuyuan Road, Suzhou New District, Suzhou China  
Tel: +86-512-68078800 Fax: +86-512-68097010

#### Latin and Central America BenQ Latin and America Corp.

8200 N.W. 33 Street, Suite 301,  
West Side Plaza III Miami, FL 33122 U.S.A.  
Tel: +1-305-4211200 Fax: +1-305-4211201



© 2017 BenQ Corp. Specification may vary by region, please visit your local stores for details. Actual product's features and specifications are subject to change without notice.

This material may include corporate names and trademarks of third parties which are the properties of the third parties respectively.

Doc: BenQ\_CORPORATE\_SOLUTION\_BR\_2017